

Terrorism Incident Annex – Sector Delaware Bay

[[Link to the Terrorism Law Enforcement and Investigation Annex in the NRP](#)]

Introduction

In responding to a potential or actual terrorist incident in the maritime environment the Coast Guard will respond with the Federal Bureau of Investigation and other appropriate Federal, State and Local agencies to establish a Unified Command.

The Unified Command will simultaneously manage incident operations involving law enforcement response and response operations aimed at protecting public health and safety.

Purpose

The purpose of this Annex is to facilitate the effective integration of law enforcement and public health and safety response activities involving potential or actual terrorist incidents that occur in the maritime environment.

This Annex should be used in conjunction with one or more of the other annexes (oil, hazardous materials, radiological, biological) as appropriate.

The guidance in this Annex includes:

- ❑ Coast Guard jurisdiction
- ❑ Federal Bureau of Investigation jurisdiction
- ❑ Unified Command Organization
- ❑ Determinations to be made by the Coast Guard Incident Commander (CGIC)
- ❑ Unified Command Priorities
- ❑ Initial Unified Command objectives
- ❑ Unified Command considerations
- ❑ Operations Section organization model
 - Operations Section Chief
 - Deputy Operations for Maritime Security
 - Deputy Operations for Law Enforcement and Investigation
 - Deputy Operations for Response and Recovery
- ❑ Planning Section
 - Deputy Planning Section Chief
- ❑ Coordination between the Incident Command Post (ICP) and the Joint Operations Center (JOC)
- ❑ Coast Guard Liaison to the JOC
- ❑ Special Teams
- ❑ Logistics Section
 - Facilities Unit
 - Communications Unit
- ❑ Local maritime law enforcement tactical assets

Terrorism Incident Annex – Sector Delaware Bay

Coast Guard Jurisdiction

The Coast Guard Sector Commander is responsible for maritime law enforcement, public safety and environmental protection.

Federal Bureau of Investigation Jurisdiction

The Department of Justice through the Federal Bureau of Investigation has the lead responsibility for criminal investigations of terrorist acts or terrorist threats and for coordinating activities of other members of the law enforcement community to detect, prevent, preempt, investigate, and disrupt a terrorist attack.

Unified Command Organization

The make-up of the Unified Command organization for a terrorist incident in the maritime environment will be tailored to the type of incident. For example, in a terrorist initiated radiological incident, the Department of Energy (DOE) would be a member of the Unified Command since they are the designated Coordinating Agency for the incident. In addition to the DOE, the Coast Guard, Federal Bureau of Investigation and the state(s) would also have representation in the Unified Command. The following types of incidents would have representation from other entities:

Radiological Incident: Department of Energy (Coordinating Agency)

Biological Incident: Public Health Department

Hazardous Material Incident: Local fire department, Tri-State Maritime Safety Association, “Responsible party”

Oil Incident: “Responsible party”

Explosions: Local fire department, Tri-State Maritime Safety Association

Figure 1 is an illustration of the agencies and/or entities that could serve in the Unified Command and General Staff. The list of agencies is not exclusive.

Terrorism Incident Annex – Sector Delaware Bay

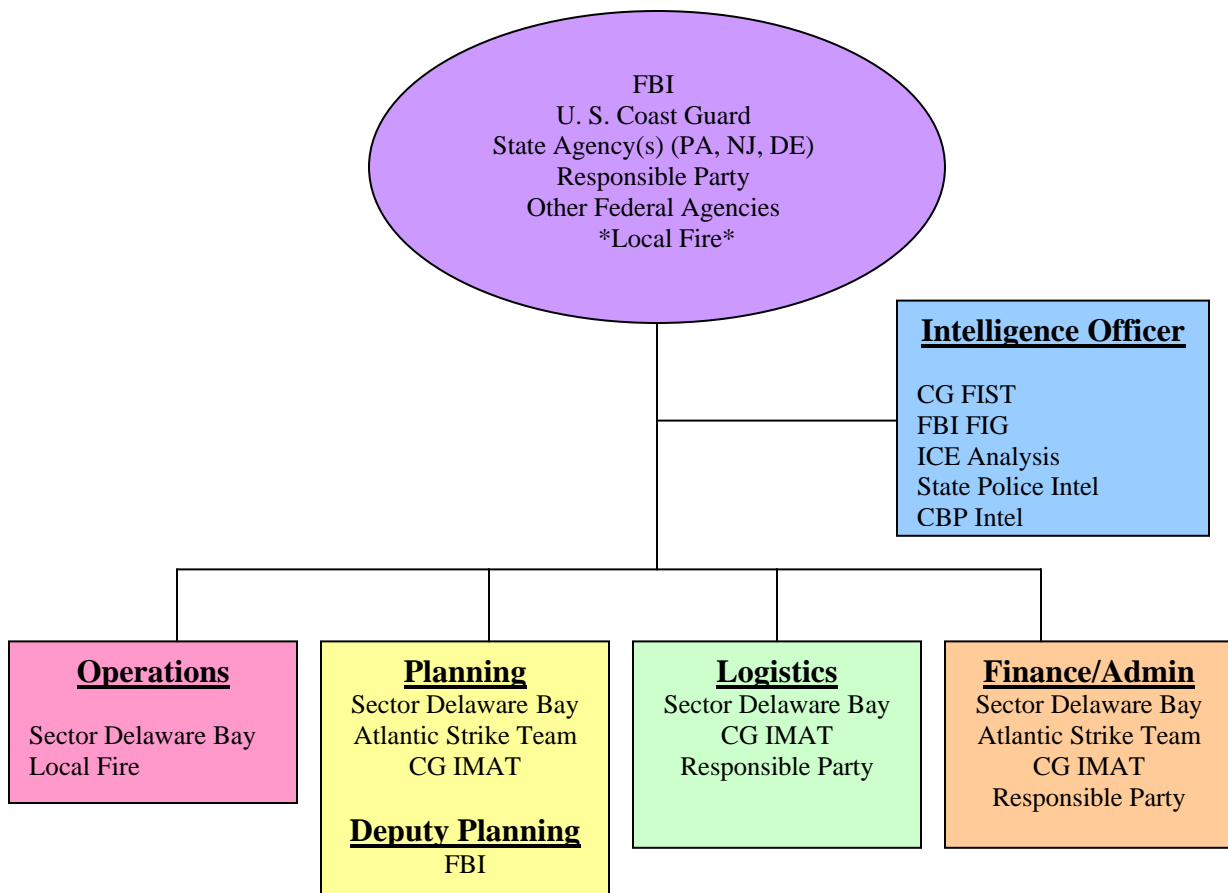


Figure 1. The type of incident and incident complexity will determine the actual agencies that make up the Unified Command and Command and General Staff.

Determinations to be made by the Coast Guard Incident Commander (CGIC)

- ❑ Initiate Critical Incident Communications procedures [Link to Critical Incident Communications Procedures Section 1050]
- ❑ Determine Safe to Respond
 - Work with the Unified Command to determine the control zones (hot, warm, cold)
 - Unified Command communicates location of zones to response personnel
 - Document Safe to Respond determination
- ❑ In consultation with the FBI, the CGIC will determine the need to place a Coast Guard liaison in the Joint Operations Center
 - Coast Guard Investigative Service to provide liaison
- ❑ In consultation with the FBI, the CGIC will determine the need to raise the Maritime Security (MARSEC) Level?
 - *Local governments are encouraged to contact the Unified Command through the Liaison Officer.*

Terrorism Incident Annex – Sector Delaware Bay

Determinations to be made by the Federal Bureau of Investigation

- ❑ Presence of secondary devices
- ❑ Extent of the crime scene

Unified Command Priorities

- ❑ Preserving life and minimizing risk to public health
- ❑ Preventing a terrorist act or expansion of an existing terrorist act
- ❑ Locating, controlling and disposing of a WMD
- ❑ Apprehending and prosecuting terrorists

Unified Command Objectives

- ❑ Conduct site assessment to determine presence of a secondary device
- ❑ Institute actions to protect the crime scene
- ❑ Communicate with port stakeholders
- ❑ Ensure the preservation of evidence
- ❑ Secure/Protect port infrastructure to prevent further/expanded attack

Unified Command Considerations

- ❑ Determine need to implement responder identification protocols
- ❑ Determine need to place law enforcement personnel on board commercial clean up vessels
- ❑ Determine the appropriate level of law enforcement protection to protect responders

Operations Section Organization Model

The Unified Command and the type of incident to which it is responding, will dictate the agency that will fill the role of Deputy Operations for Response and Recovery. Figure 2 is an illustration of the agencies and/or entities that could serve as the Operations Section Chief and Deputy Operations Section Chiefs. The list of agencies is not exclusive.

Terrorism Incident Annex – Sector Delaware Bay

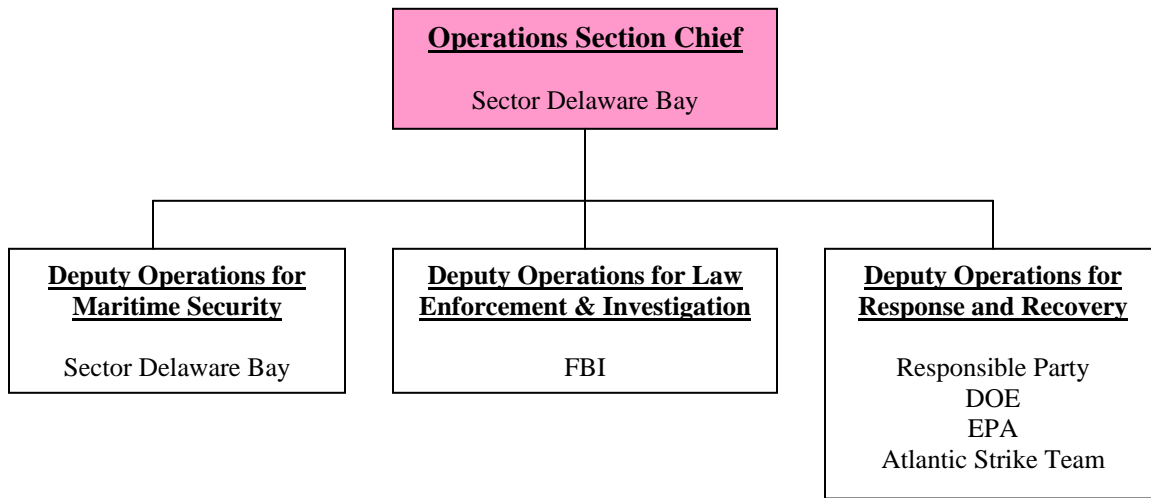


Figure 2. The Operations Section organization during a terrorist response involving both crisis and consequence management activities.

Operations Section Chief

For incidents that involve both crisis and consequence management the Operations Section Chief's primary role shifts to one of coordination, ensuring that all tactical activities planned among the Deputy Operations Chiefs result in well coordinated joint operations. In this capacity the Operations Section Chief:

- ❑ Ensures that the Unified Command objectives are accomplished
- ❑ Minimizes duplication of effort among the Deputies
- ❑ Looks for opportunities to share limited resources
- ❑ Ensures that Unified Commanders receive comprehensive briefings
- ❑ Ensures that Operations fully supports the ICS Planning Process
- ❑ Ensures that tactical planning is coordinated among the Deputies

Working closely together, the Deputy Operations Section Chiefs develop tactical plans and manage their respective fields of expertise

Deputy Operations for Maritime Security: A Coast Guard officer serves as the Deputy Operations for Maritime Security and is responsible for the management of all the maritime law enforcement response activities. Responsibilities include but are not limited to:

- ❑ Supporting the development of tactical plans
- ❑ Coordinating closely with the FBI and other law enforcement agencies
- ❑ Coordinating search and rescue operations as necessary
- ❑ Establishing and enforcing safety and security zones

Terrorism Incident Annex – Sector Delaware Bay

Deputy Operations for Law Enforcement and Investigation: An FBI Special Agent will serve as the Deputy Operations Section Chief for Law Enforcement and Investigation. Responsibilities include but are not limited to:

- ❑ Managing the deployment and coordination of Federal law enforcement and investigative assets in support of the Incident Action Plan
- ❑ Collection and dissemination of intelligence

Deputy Operations for Response and Recovery:

The Deputy Operations for Response and Recovery is usually filled by the agency or entity with the legal responsibility for removing the public health and environmental threat. Responsibilities include but are not limited to:

- ❑ Support the development of tactical plans that address public health and environmental threats
- ❑ Coordinate closely with the FBI and other law enforcement agencies
- ❑ Depending on the incident, implement actions outlined in the appropriate consequence management Annex (oil, hazardous materials, radiological, biological)

Planning Section

In a terrorist incident response, the FBI will place a special agent in the Planning Section as a Deputy Planning Section Chief. In this capacity the FBI is responsible for:

- ❑ remaining up-to-date on the most current incident situation
- ❑ acting as a conduit for requests for additional crisis assets, and,
- ❑ assisting with the development of the Incident Action Plan

Coordination between the Incident Command Post (ICP) and the Joint Operations Center (JOC)

The JOC is an FBI-managed interagency command and control center for managing multi-agency law enforcement and investigative responses to credible terrorist threats or an actual incident. The JOC structure calls for liaison representation to and from the Unified Command to ensure that intelligence of relevance and value to consequence managers is passed to the Unified Commanders. The JOC:

- ❑ Is the decision making authority for law enforcement activities
- ❑ Manages and retains law enforcement sensitive intelligence

The JOC does not manage consequence management activities, but ensures that law enforcement activities are communicated and coordinated with the Unified Command.

Terrorism Incident Annex – Sector Delaware Bay

Coast Guard Liaison to the JOC

As a maritime law enforcement agency, the Coast Guard would be a participant in the JOC with Coast Guard Investigative Service (CGIS) agents teamed with FBI agents to collect and monitor intelligence and investigative information to determine what is of particular interest to the Coast Guard. In this capacity the Liaison would:

- ❑ Monitor intelligence and investigative activity and determine what is of particular interest to the Coast Guard.
- ❑ Ensure that intelligence information relevant to consequence managers is passed to the Unified Commanders.

Special Teams

Some of the special teams that can be requested to provide support to both crisis and consequence management operations include:

Maritime Safety and Security Team
District-5 Field Intelligence Support Team
Coast Guard Atlantic Area Incident Management Assist Team
Coast Guard Investigative Service
3rd Civil Support Team (Refer to phonebook for contact number)
USCG Public Affairs Information Team
DOE RAP Team
Atlantic Strike Team
Agency for Toxic Substance Disease Registry
[\[Link to Special Teams Manual\]](#)

Logistics Section

The unique nature of a terrorist incident requires the collection and sharing of sensitive or classified information. The establishment of the Incident Command Post must take into consideration the following:

- ❑ Facilities Unit
 - Include dedicated private space for law enforcement
- ❑ Communications Unit
 - Determine need to request communications support from CAMSLANT [\[Link to CAMSLANT Requesting Procedures Section 9790\]](#)
 - Determine need to provide Cellular STU-III support to the Coast Guard Incident Commander

Local Maritime Law Enforcement Tactical Resources

Local law enforcement assets that can support incident operations.

- ❑ New Jersey State Police (Marine Police)

Terrorism Incident Annex – Sector Delaware Bay

- ❑ Delaware Department of Natural Resources and Environmental Control
- ❑ Delaware River and Bay Authority
- ❑ Delaware River and Port Authority

For local subject matter experts see:

[Link to Delaware Estuary Science Directory]